

**VILLAGE OF MOKENA  
11004 CARPENTER STREET  
MOKENA, ILLINOIS 60448**

**FY2024 High Density Mineral Bond Program**

**Notice: Your Cul-de-sac Will Be Closed**

- July 22 - **Blue** Streets
- July 23 - **Yellow** Streets

Dear Resident:

As part of the Village of Mokena's continued efforts to maintain its roadways, the City's contractor, Denler Inc. will be applying a pavement preservation product to the pavement of your cul-de-sac. This maintenance technique seals and extends the life of the existing pavement. This material is typically applied in two thin layers over the course of one day.

**No parking on either side of the cul-de-sac will be allowed where work is being done. Access to your driveway will also not be available during this time. All vehicles need to be removed from the street or driveway by 7am Monday, July 22 (Blue Streets) or 7am Tuesday, July 23 (Yellow Streets).** Parking will be available on adjoining streets; the police department will be notified of the overnight parking in advance.

Barricades will be placed at the entrance of your cul-de-sac in advance of the material being placed on the street. These barricades will be removed when the material has dried. The removal of the barricades/no parking signs will indicate the product has dried and residents are permitted to drive on the cul-de-sac.

**Please note that the surface treatment will stick to shoes, bicycles and automobile tires. Please do not drive, ride or walk on the surface until it is completely dry, and please do not assume the material is dry until the contractor removes the barricades and re-opens the cul-de-sac to traffic. ALL OUTSIDE WATER MUST BE TURNED OFF.** Water may damage the installation of the surface treatment. Please do not have sprinklers, hoses, etc. set to come on 24 hours before the road closure, during the road closure, or 24 hours after the road closure.

We realize that this is an inconvenience, so thank you in advance for your cooperation and patience as we work to improve our roads. If you have any questions or concerns, please feel free to contact Denler, Inc. (708-479-5005) or the Village of Mokena, Abigail Gerstenkorn (708-479-3900). Any scheduling changes due to weather or other factors will be posted on the Contractor's website, [www.denlerinc.com](http://www.denlerinc.com), Resident Alert section.

Refer to the other side of this notification for a map of streets including the dates of work.

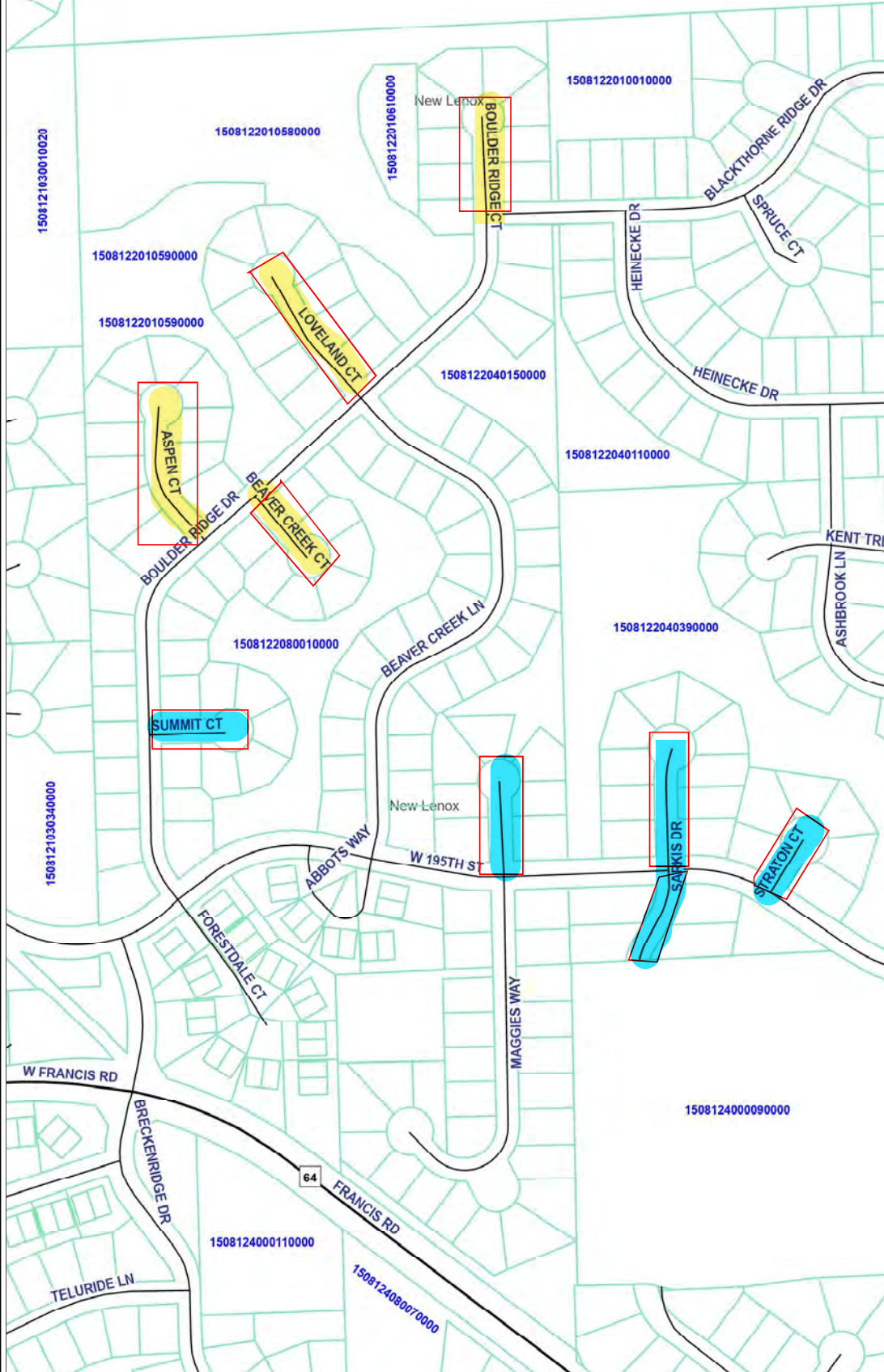


# FY24 HA5



## Legend

- Roadways
  - Federal
  - State
  - County
  - Local and Private
- Parcels
- Townships



## Notes

1:4,514

0 0.07 0.1 Miles



WGS\_1984\_Web\_Mercator\_Auxiliary\_Sphere



Disclaimer of Warranties and Accuracy of Data: Although the data developed by Will County for its maps, websites, and Geographic Information System has been produced and processed from sources believed to be reliable, no warranty, expressed or implied, is made regarding accuracy, adequacy, completeness, legality, reliability or usefulness of any information. This disclaimer applies to both isolated and aggregate uses of the information. The County and elected officials provide this information on an "as is" basis. All warranties of any kind, express or implied, including but not limited to the implied warranties of merchantability, fitness for a particular purpose, freedom from contamination by computer viruses or hackers and non-infringement of proprietary rights are disclaimed. Changes may be periodically made to the information herein; these changes may or may not be incorporated in any new version of the publication. If you have obtained information from any of the County web pages from a source other than the County pages, be aware that electronic data can be altered subsequent to original distribution. Data can also quickly become out of date. It is recommended that careful attention be paid to the contents of any data, and that the originator of the data or information be contacted with any questions regarding appropriate use. Please direct any questions or issues via email to [gis@wilcountynilinois.com](mailto:gis@wilcountynilinois.com).